

#### TECHNICAL CHARACTERISTICS OF THE CERAMIC DISCS:

Material:	<b>AL<sub>2</sub>O<sub>3</sub></b>
Surface roughness Ra:	<b>0.2 μm</b>
Contact surface area:	<b>50-80%</b>

#### TECHNICAL CHARACTERISTICS OF THE CARTRIDGE:

Opening angle:	<b>25°</b>
Mixing angle:	<b>110°</b>
Max temperature:	<b>90°C/194°F</b>
Recommended tightening torque:	<b>12-13 Nm / 106-115 lbf·in</b>

#### Pressure test:

Pneumatic:	<b>6 bar / 87 psi</b>
Hydraulic:	<b>35 bar / 500 psi</b>

#### Flow rate:

(3 bar / 45 psi, test faucet, EN 817)

**31.4 l/min / 8.3 gpm** without resistance

**24.1 l/min / 6.4 gpm** with resistance „D”

**21.5 l/min / 5.7 gpm** with resistance „C”

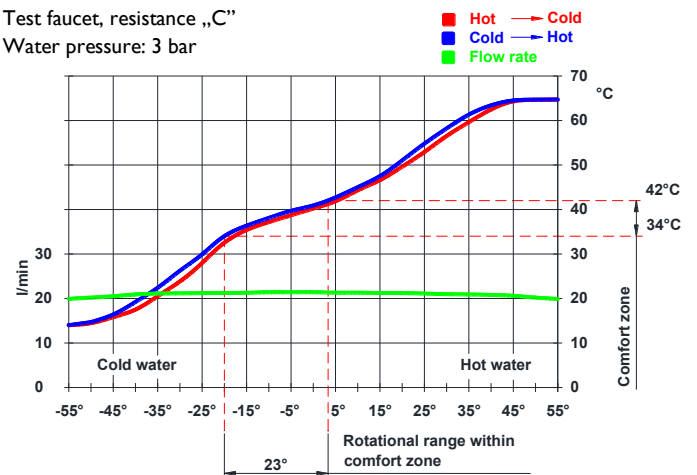
#### Endurance test:

EN 817	70 000 cycles
ASME A 112.18.1M	500 000 cycles

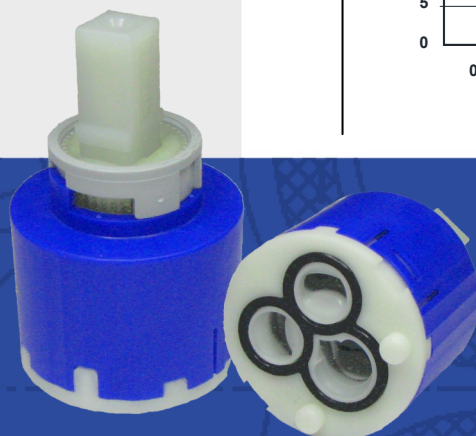
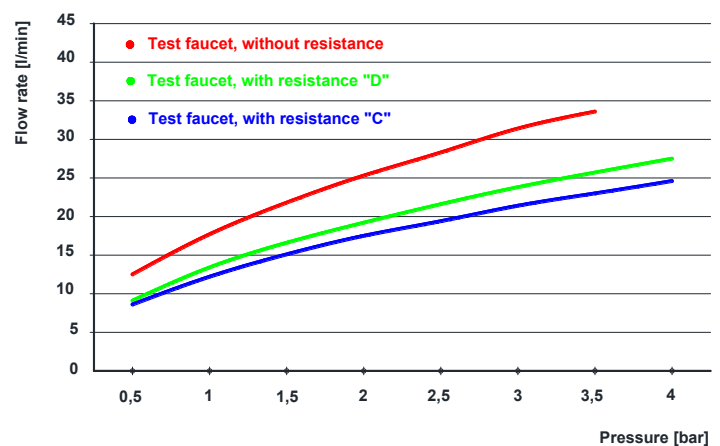
- This cartridge has energy saving feature. Opening angle of ECO function is 10°. In this position the economical flow rate: 6,6 - 8,4 l/min / 1,7 - 2,2 gpm at 3 bar / 45 psi.
- High rotational range within comfort zone:  
In full open position: 23° rotational range  
In ECO position (opening angle: 10°): 26° rotational range
- This cartridge is ideal for shower, wash-bowl, kitchen and bidet.
- Quiet working

#### FLOW RATE & HYSTERESIS CURVES

Test faucet, resistance „C”  
Water pressure: 3 bar



#### FLOW RATE CURVES



# KNC-40

## CARTRIDGES

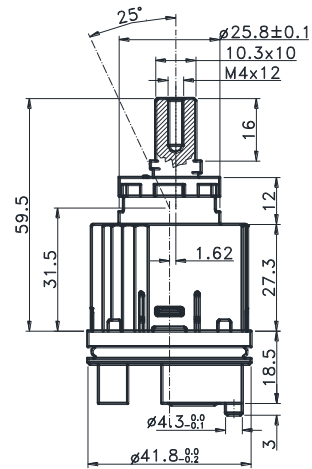
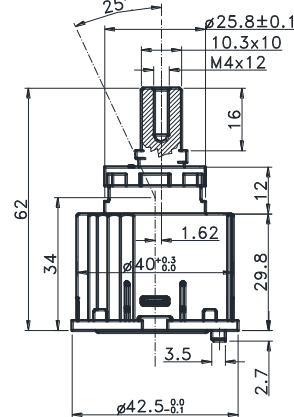
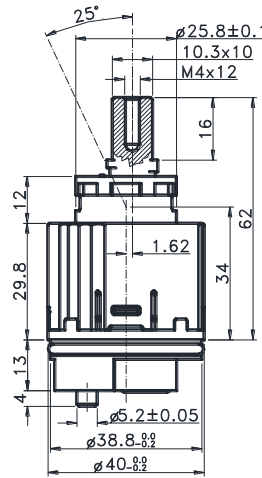
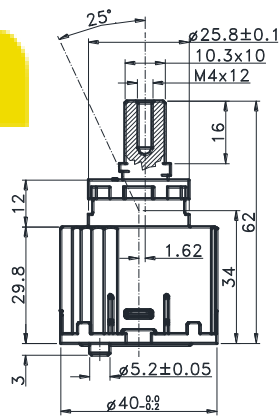
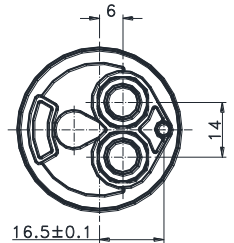
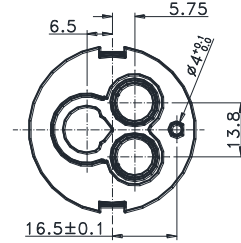
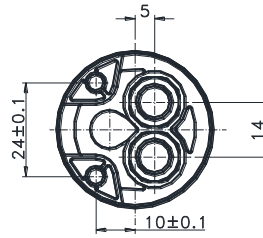
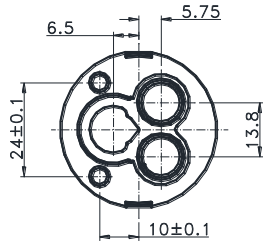
A • B

# KNC-42

## CARTRIDGES

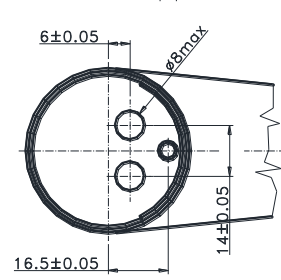
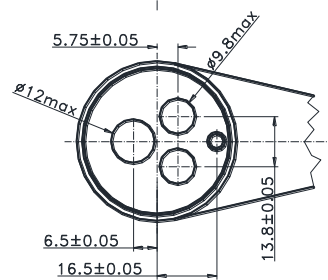
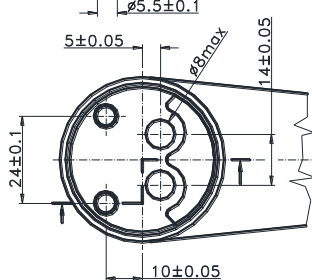
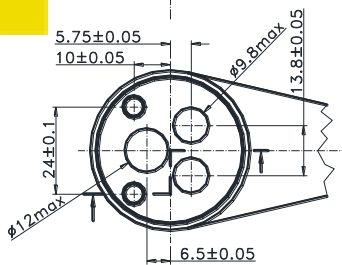
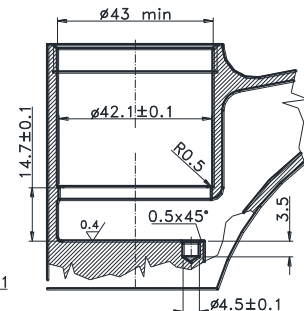
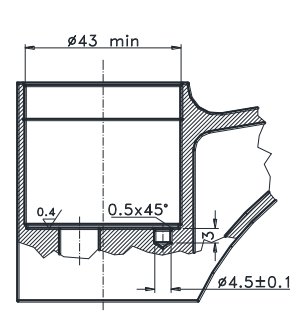
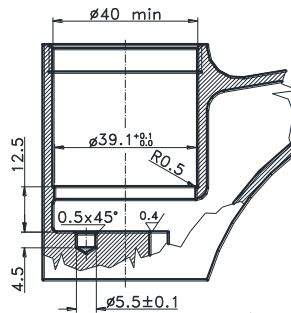
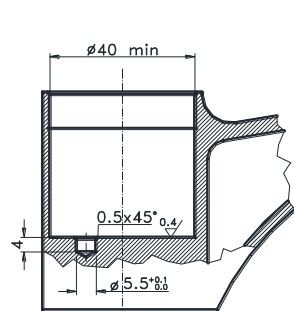
C • D

KNC-40  
Cartridges



### INTERCHANGEABLE WITH 40MM CONVENTIONAL SINGLE-LEVER CARTRIDGES

Bodies



KNC - 40 A

KNC - 40 B

KNC - 42 C

KNC - 42 D